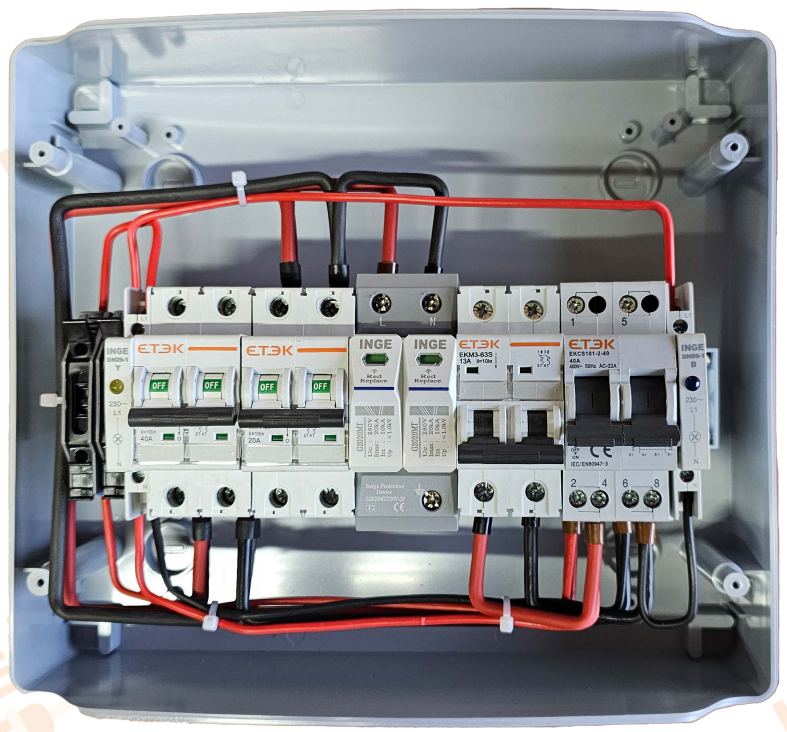


- 1. Fuses for Indication Lights
- 2. Grid Indication Light
- 3. Main MCB 40A
- 4. Inverter Input MCB 20A
- 5. Grid Surge Protection Device
- 6. Inverter Output MCB 13A
- 7. Change Over Switch 40A
- 8. Output Indication Light

Inverter Input



INGE FZE



Wiring Diagram

This DB is wired with 6mm GP wire