

## 8000 WATT PURE SINE WAVE DIGITAL INVERTER GENERATOR

DESIGNED TO BACK UP ROOF TOP SOLAR

Now with



2 - WIRE  
AUTO START

8000Watt | 459CC | 26L



8000Watt  
MAXIMUM RATED OUTPUT



ELECTRIC / RECOIL  
STARTING METHOD



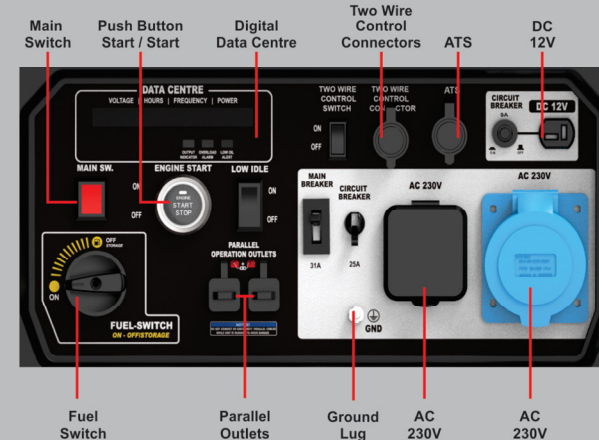
\*Machine can only be connected in parallel by using the Parallel Box which is not included.



PARALLEL BOX NOT INCLUDED



Product Code: GP8000IS  
Barcode: 6009711570356



1 YEAR  
WARRANTY

### Dimensions

- 850mm (L)
- 790mm (W)
- 650mm (H)
- Packaged Weight: 133kg

### TECHNICAL INFORMATION

Rated Voltage (V)	230V	Starting Method	Recoil/Electric/ Remote Control Ignition
Engine Displacement (CC)	459CC	Rated Frequency (Hz)	50 Hz
Fuel Tank Capacity (L)	26L	Cont. Running Time @50% Load	11hrs
Noise Level @100% 7m	68dB	Cont. Running Time @100% Load	6hrs
Open Air (db)	68dB	Digital Inverter Module	Yes
Rated Power Watt	7000Watt	3-1 Stage Digital Meter	Yes
Max. Power Watt	8000Watt	Low Oil Alert Sensor	Yes
Amperage (AMPS)	29.16Amp	5 Amp USB Out	Yes
Weight (Kg)	133Kg	Battery - Lead Acid	Yes
		Oil Capacity	1000ml